

GUEST GUIDEBOOK

*Fountain Resort  
Motel*



**ASURE**  
ACCOMMODATION GROUP



# WELCOME,

We're so glad you've chosen Fountain Resort Motel for your stay in beautiful Nelson! – the gateway to golden beaches, national parks, wineries, markets, and outdoor adventures. We invite you to make this your home base for relaxation and unforgettable local experiences.

*Thinking of staying longer?* You might want to — there's a lot to do here!

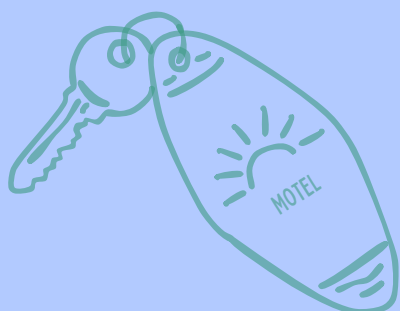


## Fountain Resort Motel



## YOUR STAY AT A GLANCE

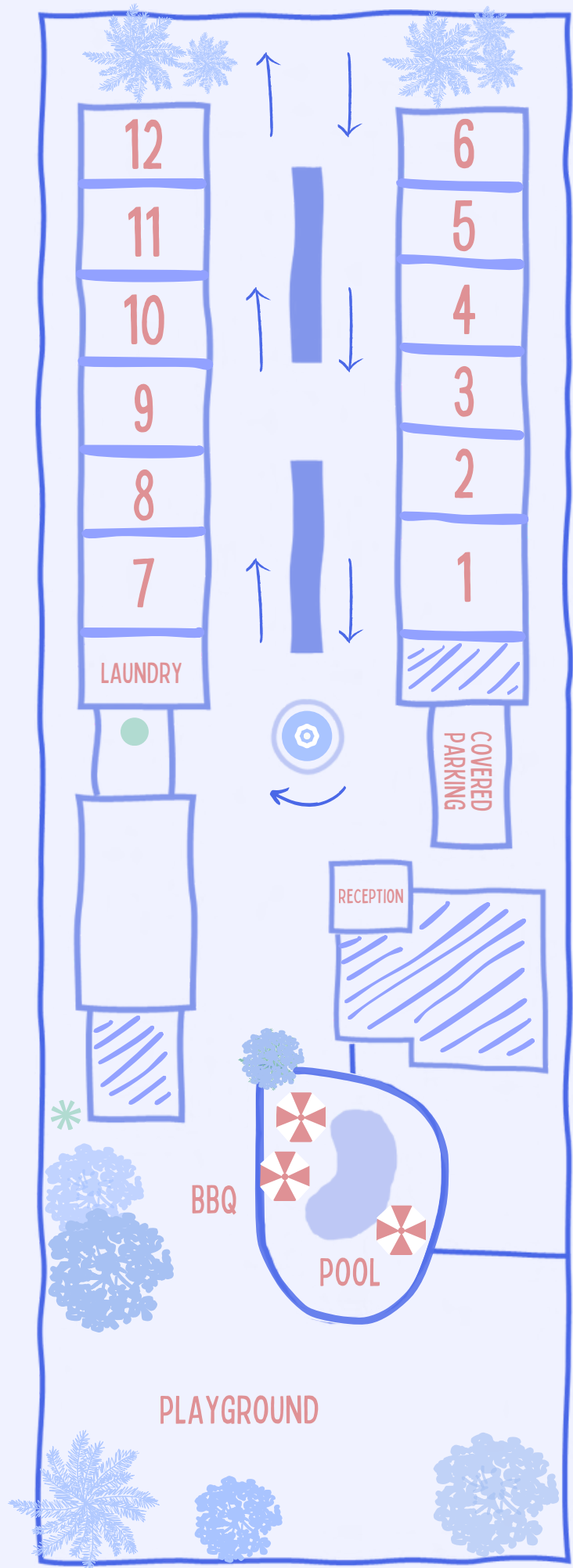
- Wi-Fi Network: Fountain\_Resort\_Guest
- Wi-Fi Password: FRWinter2019
- Check-In: From 2pm
- Check-Out: 10am  
(Ask about a late checkout or extra nights!)
- Housekeeping:  
Daily room service, typically 9am – 12pm
- Front Desk Contact: 03 548 5099



GREEN STREET

# Fountain Resort Motel

-  Bins + Recycling bins
-  Washing Line
-  Fountain  
(emergency assembly point)







## ABOUT US — Your Hosts Harry + Heidi... and Jake the dog

We're Harry and Heidi, a young couple with shared love for great hospitality. After working in holiday park management, we decided to take the leap and fulfil our dream of running our own business. In March 2025, we took on Fountain Resort Motel, and we've been pouring our hearts into it ever since.

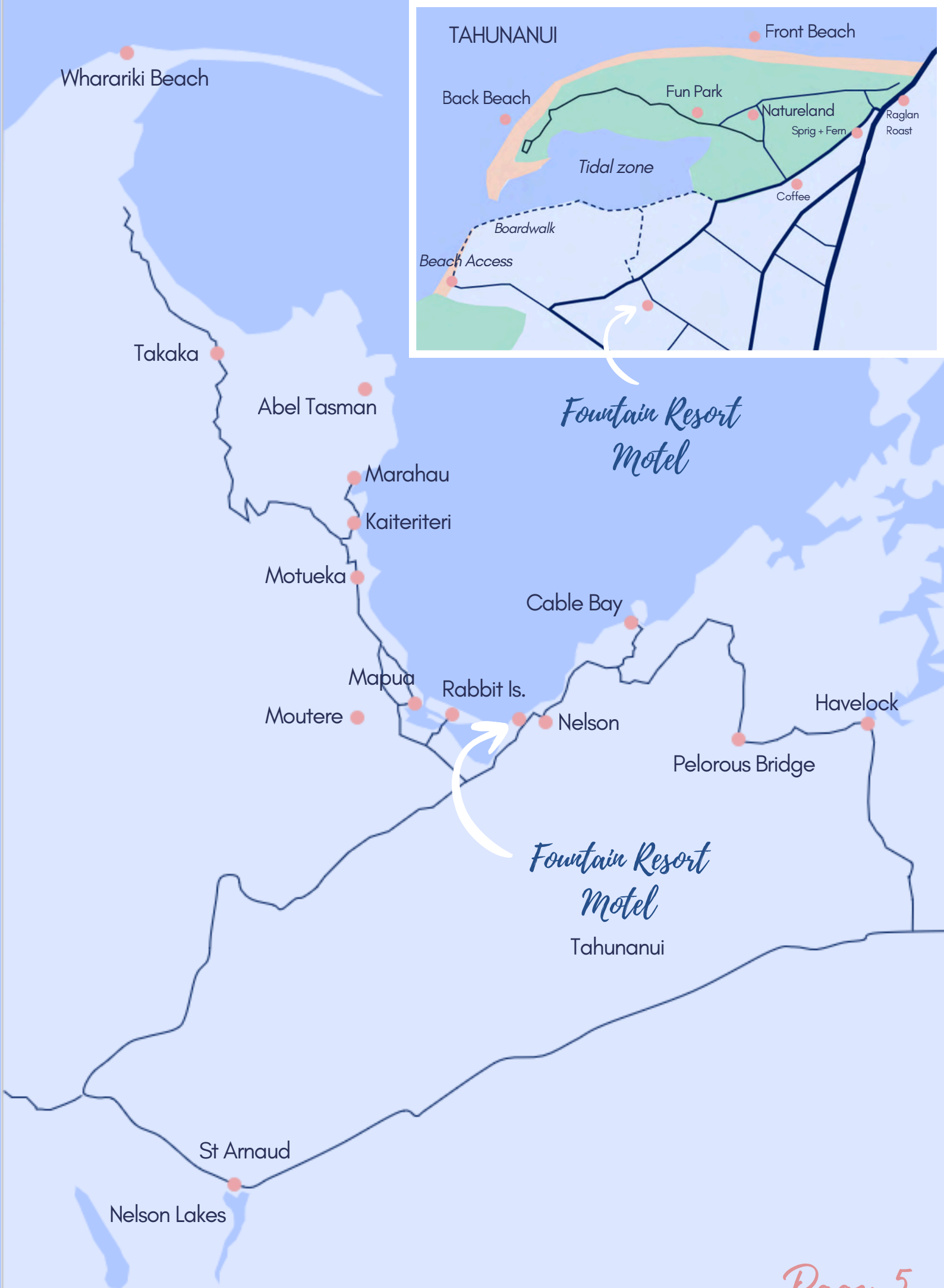
Our goal is simple: To offer a clean, comfortable and affordable stay while modernising and refreshing the motel along the way.

Our first big project was the reception area, and we're thrilled with how it turned out. We hope you love it just as much as we do! As we continue renovating, we're excited to bring fresh ideas and improvements into your rooms too.

We absolutely love this location — so close to the beach, with a relaxed, easy-going lifestyle and everything just a short drive away.



If you enjoyed your stay, a 5-star review on Google goes a long way in helping our small business grow and continue improving. Your support truly makes a difference — thank you!

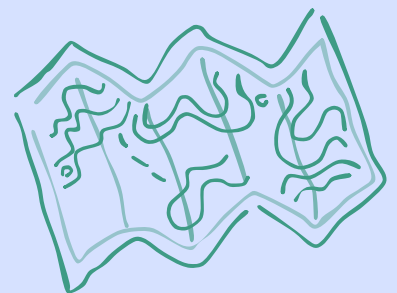


# LOTS TO LOVE,

Nelson is a destination. Our guests often extend their stay after discovering how much there is to explore nearby and around!



TAHUNANUI .....	Page 7
FAMILY ACTIVITIES .....	Page 8
NELSON CITY .....	Page 9
WINE & DINE NELSON CITY .....	Page 10
CABLE BAY .....	Page 11
MAPUA WHARF .....	Page 12
ABEL TASMAN NATIONAL PARK .....	Page 13
NELSON LAKES NATIONAL PARK .....	Page 14
MOTUEKA .....	Page 15
KAITERITERI .....	Page 15
RABBIT ISLAND .....	Page 16
MOUTERE HILLS .....	Page 16
FURTHER AFIELD .....	Page 17
GUEST INFO .....	Page 18







# TAHUNANUI

*Look no further, you're here!*

Nestled on the sparkling coastline of Tasman Bay, Tāhunanui (locally known as "Tāhuna") is a beloved beachside suburb that blends stunning natural beauty, relaxed coastal vibes, and easy access to the best of the Nelson Tasman region.



## TAHUNANUI BEACH & PADDLEBOARD/KAYAK HIRE

Just a few minutes walk!

It's one of New Zealand's most iconic beaches — long, flat, safe, and incredibly swimmable.

- Perfect for families, sunbathers, and paddleboarders.
- Shallow, calm water = ideal for kids.
- Stunning sunsets over Tasman Bay.
- Hire Kayaks or paddleboards from Paddle Nelson, prices start from \$25

Tips: Go early morning or golden hour for magic light and fewer crowds.

## GREAT TASTE TRAIL

Hire a bike/e-bike from *Gentle Cycling* and ride the Great Taste Trail, right here on our doorstep, we recommend completing the Tahunanui - Mapua section, this trail includes a short 10min ferry from rabbit island to Mapua Wharf

30km (60km there and back) 4-6 hrs  
Class 2 grade - easy and flat ride



## EAT & DRINK LIKE A LOCAL



### *Raglan Roast*

Grab a cup and watch the world go by



### *Boat Shed Cafe*

Enjoy lunch or dinner overlooking the beautiful Tasman Bay,



### *Sprig + Fern*

*Tahuna* Award-winning local craft beers, tasty pizzas + burgers too

# ACTIVITIES FOR FAMILIES

Tahunanui is the perfect location for families, with so many easy and accessible activities

## NELSON FUN PARK



A family-friendly amusement park only a short walk away!

Take the family and have a go at...

Bumper Boats, mini golf, laser tag, go karts, trampoline park or the Hydro slide in warmer months

Prices start from \$11



## NATURELAND WILDLIFE TRUST

Natureland Wildlife Trust

Why go? A small, hands-on zoo and conservation center, perfect for kids and animal lovers.

- Meet farm animals, monkeys, reptiles, and exotic birds.
- Interactive and educational.

Child \$11, Adult \$21



## PIC'S PEANUT BUTTER WORLD

Immerse yourself in the world of Pic's Peanut Butter and book a 1 hr tour which includes tastings -yum!

Free for under 15's, \$25 for Adults

Closed weekends and public holidays

## NELSON CLASSIC CAR MUSEUM



Discover a stunning collection of beautifully restored vintage vehicles – a fun and fascinating journey through automotive history that the whole family will enjoy – Plus they have their own cafe!

Child \$8, Adult \$19





# NELSON CITY

10 minute drive

Nelson City is a vibrant, walkable hub full of boutique shops, art galleries, street cafes, and riverside charm — the perfect base to explore New Zealand's creative heart

## NELSON SATURDAY MARKET

A local institution! Browse handcrafted goods, fresh produce, artisan food, street music, and uniquely Nelson-made souvenirs.

Why go? It's the best place to feel Nelson's creative, community vibe.

Every Saturday 8am – 1pm, located at Montgomery Square

Tip : Checkout Kirby Lane, this is Nelson's vibrant, open-air lane, filled with the best food trucks around. (closed weekends)



## CHRIST CHURCH CATHEDRAL

Walk up the iconic cathedral steps for sweeping views over Nelson City, explore the historic cathedral and its peaceful gardens.

Why go? It's the city's most recognisable landmark and offers great photo ops.



## THE SUTER ART GALLERY & QUEEN'S GARDENS

Explore one of New Zealand's oldest art galleries, showcasing local and national works — then stroll through the peaceful, beautifully landscaped Queen's Gardens right next door.

Why go? Art, culture, and nature all in one spot. Plus it's free entry all year.



## CENTRE OF NZ WALK

A short scenic uphill walk in Nelson, leading to a historic survey point. Enjoy panoramic views over the city and bay

Fun fact, its not actually the centre of NZ, but close enough!



# EAT AND DRINK IN NELSON CITY

10 minute drive

Discover the taste of Nelson, where cozy cafés, artisan eateries, and waterfront restaurants serve up unforgettable breakfasts, leisurely lunches, and gourmet dinners or unwind with a craft beer, fine wine or cheeky cocktail.

## CAFES & RESTAURANTS

### Hardy St Eatery

A local gem where everything is made from scratch. The perfect spot to settle in for a delicious brunch.



### Ruby's Espresso

Stunning Marina Views, perfect spot to enjoy a coffee or a cold drink too

### East St Cafe & Bar

100% vegan café-bar that's creative and fun — cafe by day serving great food, bar with live music in the evening.



### The Styx

Beloved for its fresh, seasonal seafood dishes, stunning waterfront views, and cozy atmosphere.

### Hawker House

Inspired by Southeast Asian street food, this restaurant uses home-grown ingredients to create flavorful dishes.



Tip - Enjoy a drink and grab a Nelson Taxi (03 548 8225), around \$25 fare from Nelson - Tahunanui

## DRINKS



### Kismet Cocktail & Whiskey Bar

A moody, intimate atmosphere with expertly crafted cocktails, local spirits, and eclectic charm



### The Free House

A converted church turned into a cozy craft beer bar, offering a wide selection of local and international craft beers on tap



### Red16

Live music on weekends and great drinks - the perfect spot to dance the night away





# CABLE BAY

30 minute drive

Experience the tranquil beauty of Cable Bay, with calm turquoise waters and a pebbly shore perfect for swimming and kayaking. A scenic causeway connects it to the unique, privately-owned Pepin Island



## ENJOY THE CABLE BAY SHORE

*Park up and enjoy Cable Bay your way, the crystal-clear, sheltered waters are ideal for safe swimming, snorkeling, and kayaking. Or lounge out and soak up some sun.*



## INDULGE AT THE CABLE BAY CAFÉ

Cable Bay Café is a local gem, loved for its relaxed coastal setting, friendly vibe, and their famous Cable Baygels—a must-try for any visitor



## HIKE TO THE CABLE BAY LOOKOUT

*Top Tip: Go during high tide to see the beautiful contrasting bays.*

This lookout point is part of the longer Cable Bay Walkway, park at the trailhead (cable bay) and hike to the summit of Sentinel Hill, 1 – 1.5 hr round trip

## RIDE THE SKYWIRE

Soar high above native forest and valleys on the Cable Bay Skywire — one of the world's longest flying foxes, for an unforgettable thrill ride with breathtaking panoramic views

Child \$80, Adult \$110

*Note: Minimum height restriction 1.2 meters*







# MAPUA

30 minute drive

Mapua is a local favourite situated on the Ruby Coast. The vibrant Mapua wharf is the perfect place for waterfront dining, boutique shopping and soaking up the relaxed coastal charm.



## BROWSE BOUTIQUE SHOPS & GALLERIES

Explore a variety of local art, crafts, and unique gifts, housed in the beautifully restored old apple cool store buildings, blending Mapua's rich history with its vibrant creative scene.



## MAPUA SUNDAY MARKET Summer Months only (Dec - April)

Enjoy live music, artisan goods, fresh local produce, and a relaxed, community vibe.

## SIP CRAFT BEER AT GOLDEN BEAR BREWING

Unwind with locally brewed beers with waterfront views, and live music on Fri/Sun. Golden Bear also comes with an



American/Mexican twist, serving dishes like tacos, quesadillas and hotdogs.

*Annual winter closure (July - mid September)*

## INDULGE IN THE TASTES OF MAPUA

Whether it's dining at a waterfront restaurant, enjoying classic fish and chips by the sea, or cooling off with a locally made ice cream from *Hamish's*, there's a flavour for every mood



## THE WHARF

Watch (or join!) the locals jumping from the wharf - A beloved local tradition, perfect for a summer splash or just soaking in the lively waterfront atmosphere





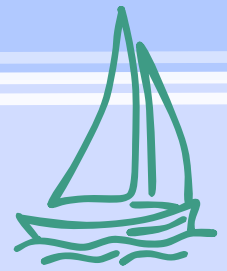


# ABEL TASMAN NATIONAL PARK

1 hr drive



Abel Tasman is New Zealand's smallest national park, but there's a lot to love in this corner of paradise. It's world renowned for golden beaches, turquoise waters and popular walking trails, including the famous multi-day *Abel Tasman Coastal Track*. – Explore Abel Tasman your way!



## 1 DAY ITINERARY

Anchorage to Marahau (4 hrs walk | 12.4 km)

Drive: From Tahunanui (1 hr) to Marahau

Water taxi: From Marahau to Anchorage Bay (book for 9:00 AM)

Walk: Anchorage → Marahau

Track type: Coastal, moderate effort, well-marked

Highlights: Additional Side tracks e.g. Cleopatra's Pool, Beaches (e.g. Tinline Bay), Native bush & ocean views, Swing bridges & scenic lookout points

Why it's great: Mix of boat + walking + beaches. No backtracking. Ideal for moderate fitness.

*Tip: Take a picnic and towels to make the most of the golden beaches*



## MULTI DAY ITINERARY

Marahau to Totaranui  
(3-5 days walk | 60 km)

Pre booking huts/campsites is essential, as well as any water taxis i.e from Totaranui back to Marahau



## FULL DAY KAYAK ITINERARY

Guided tours or kayak hire are available Oct-April

*Tip: we recommend kayaking in the Tonga Marine Reserve, best for seeing seals and their pups, as well as kayaking near the stunning Tonga arches*



# NELSON LAKES NATIONAL PARK

1 hr 10min drive

Known for its dramatic alpine landscapes, with rugged peaks, glacial valleys, and crystal-clear lakes, it's most iconic lakes, Lake Rotoiti and Lake Rotoroa are framed by dense native beech forests and mountains, offering postcard-perfect views.



## SNAP THE ICONIC PHOTO

Travel to the small town of St Arnaud (1hr 10min from here), nestled on the northern end of Lake Rotoiti, head to the shore to see where the wooden dock stretches into the still, mirror-like water, framed by towering alpine peaks.



## MOUNT ROBERT CIRCUIT TRAIL, (5 hrs walk | 9 km loop)



Drive: From Tahunanui (1 hr 25min) to the end of Mount Robert Road, where the carpark and trailhead is located.

Why it's great: Spectacular views over Lake Rotoiti and surrounding alpine peaks

Tip: Weather can change quickly - bring warm, waterproof layers and take plenty of water





## MOTUEKA

45 minute drive

Motueka is a vibrant, sun-soaked town nestled on the shores of Tasman Bay, the perfect spot to stop for brekkie before heading to Kaiteriteri and Abel Tasman. Known for its arts scene as well as the many fruit orchards and hop farms nearby.



**TOAD HALL CAFE** – A local favourite that was awarded best NZ Cafe in 2023! Fresh local food and a cozy garden area – enjoy



**ENJOY THE COASTAL VIEWS** – Grab a real-fruit ice cream and head to the Motueka Quay, you'll see the beautiful coastline and the iconic *Janie Seddon Shipwreck* – the perfect picture moment



## KAITERITERI

1 hour drive

Famously known as the gateway to Abel Tasman National Park, Kaiteriteri has arguably the most picture perfect beach. – *Looking for a beach day? look no further!*



**KAITERITERI BEACH** – A must see beach, its absolutely beautiful! – if you're looking for a quieter spot head to Little Kaiteriteri via the *Kaiteriteri Track* (5 min walk from the blue bridge)

*Start here*



**SPLIT APPLE ROCK** – A stunning natural landmark, can be seen via a short walk. However we recommend seeing by Kayak, hire at Kaiteriteri and paddle out. 1.5 – 2hrs round trip



## RABBIT ISLAND

20 minute drive

The largest island in the Waimea estuary , Rabbit island is only open during daylight hours, locals flock to make full use of the vast beach front and family friendly reserve.



**RABBIT ISLAND BEACH** – A local favourite, 13km of beach front. People come here to enjoy the beach, forest walks and the picnic and BBQ facilities dotted in the reserve.



**PICNIC/BBQ SUPPLIES** – Must stop at *Old Factory Corner* on your way to Rabbit Island, *Conning's food market* and *The Junction* stock an array of local foods, perfect for the ultimate picnic or BBQ – *you won't be disappointed*



## MOUTERE HILLS

30 minute drive

Nelson is the sunniest place in New Zealand, so it's no surprise the Moutere Hills are home to award-winning vineyards — book a wine tasting or cellar door experience and try them for yourself!



**MOUTERE HILLS VINEYARD, NEUDORF VINEYARDS** – *Neudorf Vineyards* offers premium tastings of Chardonnay and Pinot Noir in a peaceful garden setting. *Moutere Hills Vineyard* pairs diverse wine tastings with a scenic restaurant experience.



**HOP ON HOP OFF** – This tour is the easiest way to explore the Moutere Hills, with stops at top vineyards, local artisans, and New Zealand's oldest pub, *The Moutere Inn* – all without the need to drive.



# FURTHER AFIELD



## HAVELOCK

*1hr 10min drive*



Havelock is famous for its delicious green-lipped mussels, try for yourself at *The Mussel Pot*



Stunning views from *Cullen Point Lookout* – short loop walk



Try a refreshing swim at *Pelorous Bridge*



## TAKAKA & GOLDEN BAY

*2hr drive*



*Te Waikoropupu Springs* is the largest freshwater spring in NZ, beautiful crystal-clear waters.

*Fun Fact: 14,000 Litres of water is pumped from the spring every second!*



*Via Ferrata Takaka Hill*, free climbing route with iron rungs, and epic views – gear hire available at Ngarua Caves, recommended for ages 12+



*Wharariki Beach* – 1 hr drive from Takaka, explore wild, windswept sand dunes and dramatic rock formations

# GUEST INFO

## CHECK IN / CHECK OUT TIMES

Check-In: After 2:00 PM

Check-Out: By 10:00 AM

Late checkout? *Arrange with our reception, to avoid any fees.*

By checking in, guests agree to abide by all motel policies and authorize management to charge their credit card for any outstanding balances or damages

## QUIET HOURS

Quiet Hours: 10:00 PM – 7:00 AM

We ask guests to keep noise to a minimum if you are arriving/departing within this quiet time

## EMERGENCY CONTACTS

- In case of emergency, dial 111
- Motel front desk: 03 548 5099
- After-hours support: 03 548 5099
- Nearest medical centre: *Nelson Medical and Injury Centre*
- In case of fire, proceed to exit through the front door, close door and assemble at the fountain.

## NO SMOKING POLICY

Smoking is not permitted inside rooms. Please use the provided ashtrays to properly dispose of cigarette butts.

*Please note: Additional cleaning or damage caused by smoking will result in a fee. If a room is taken out of service due to smoke odors, additional night's charge will apply to cover the lost revenue.*

## PET POLICY

Pets are not permitted inside rooms, as this will result in additional cleaning fees.

## GUEST VISITORS

Please inform reception of any guests you wish to visit the property. All guests to vacate by 10pm, however management reserves the right to ask any visitor to leave the property at any time.

Parties or gatherings are not permitted without management approval.

## PARKING RULES

Free parking is available for one vehicle per room in the designated space. For additional parking, please ask at reception.

## GUEST LAUNDRY

Coin-operated washers and dryers are located near the fountain and accept \$2 coins only (\$4 per wash, \$4 per dry).

Complimentary laundry powder is available for guest use.

Outdoor clotheslines are located behind the building near the playground.

*For the comfort and appearance for all guests, please do not hang laundry outside rooms*

## RUBBISH & RECYCLING

Bins are emptied daily during daily services, however our general bin, recycling bin and glass bins are all located near the guest laundry facilities.

## POOL & PLAYGROUND RULES

The pool and playground are open from 8am – 9pm, all children to be supervised by a parent/caregiver.

No glass or food is permitted in the pool area.

No glass is permitted in the playground area.

Please use pool towels provided at the pool entrance

## HOUSEKEEPING & TOWELS/LINEN USE

Housekeeping is provided daily.

- Towels are for in-room use only
- Please do not use white towels for makeup or cleaning

## ROOM CARE / DAMAGE POLICY

Guests are responsible for any damage to or removal of motel property, and associated charges will reflect the cost of repair or replacement plus any down time.

*By staying with us, guests agree that any damage or loss caused to the property, furnishings, or contents may be charged to the registered guest's credit card*

## LOST & FOUND POLICY

Items left behind will be held for 14 days. Guests are responsible for postage if they wish to have items mailed back.

## COOKING POLICY

Light cooking is permitted using provided appliances.

Excessive cooking odors or grease may incur an additional cleaning fee. Please avoid cooking foods such as curries, seafood and fried meals.

## LIABILITY DISCLAIMER

We are not responsible for loss or theft of personal belongings. Please lock your room when not in use.

## GUEST CONDUCT & RIGHT OF EVICTION

To ensure a pleasant and safe environment for all our guests, we ask that everyone behave in a respectful and considerate manner at all times.

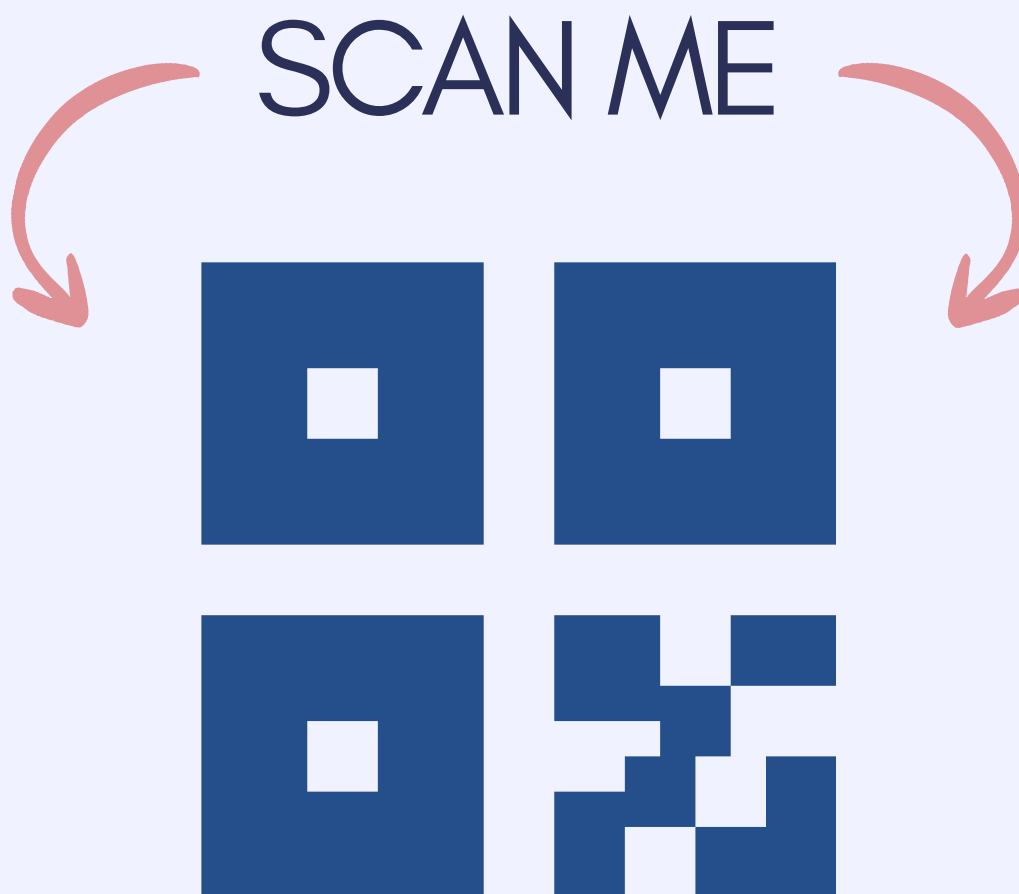
Management reserves the right to refuse service or require any guest to vacate the premises immediately, without refund, if in our reasonable opinion the guest:

- Engages in anti-social, disruptive, abusive, or threatening behavior;
- Causes discomfort, nuisance, or distress to other guests, staff, or neighbors;
- Acts in a way that may damage the property or reputation of the motel.

Our goal is to maintain a welcoming, safe, and enjoyable atmosphere for everyone.







Scan me & take me with you!

Grab a digital copy of our guidebook so you've got  
all the best tips, info, and local favourites right in  
your pocket.